


Tameside Serious Violence Strategy 2024-2029



The Serious Violence Duty

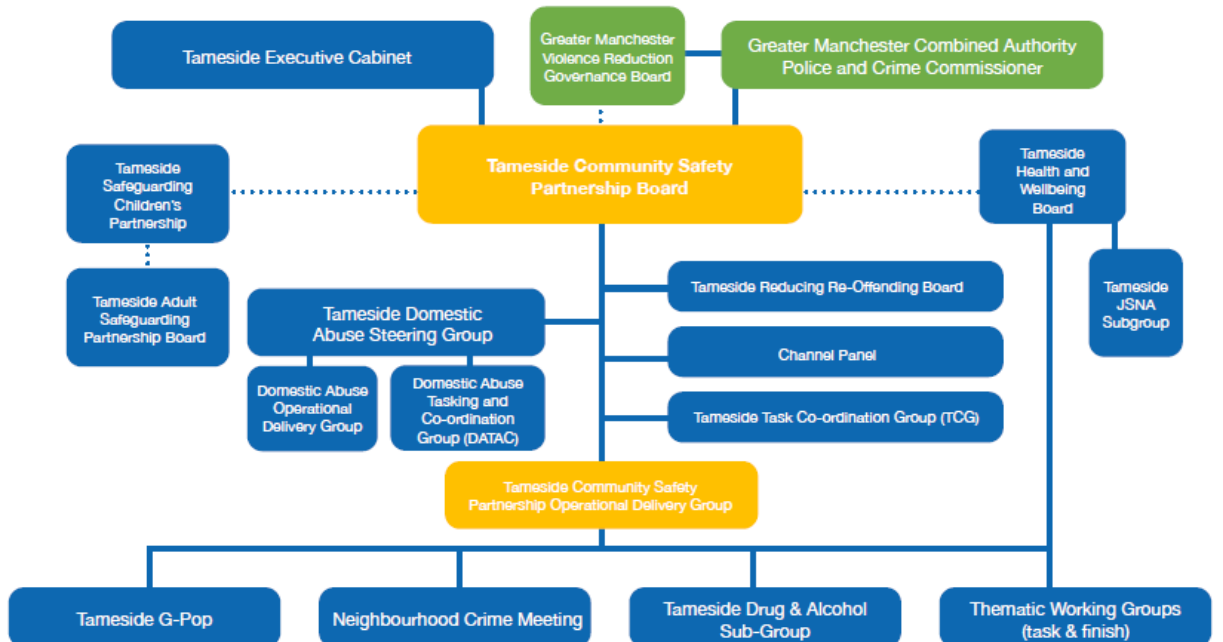
The Duty requires 'Specified Authorities' for a local government area to work together and plan to prevent and reduce serious violence.

- Tameside Council
- Greater Manchester Police (GMP)
- Greater Manchester Fire & Rescue Service (GMFRS)
- Probation Services
- Youth Offending Services
- NHS Greater Manchester Integrated Care Board (NHS GM ICB)



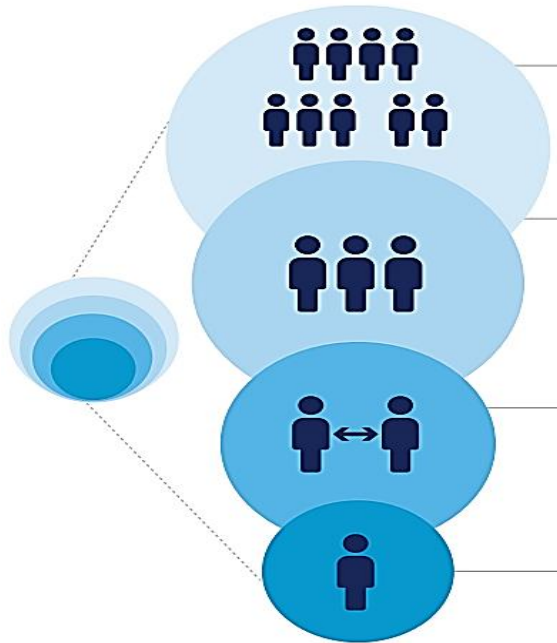
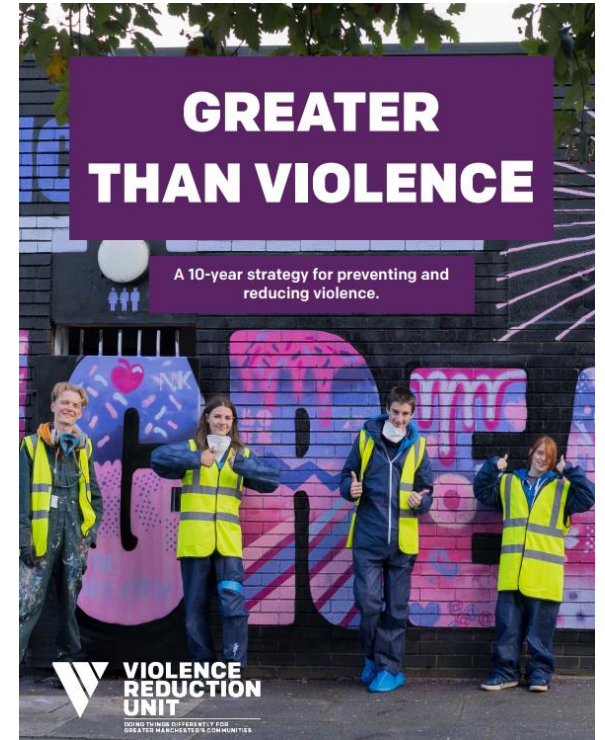
Home Office

Serious Violence Duty
Preventing and reducing serious violence



Working Across Greater Manchester

Tameside partners work closely with the GM Violence Reduction Unit (VRU) who have produced a Serious Violence Strategy for Greater Manchester.



The Duty encourages a 'public health approach' which has been done for GM and Tameside



Defining Serious Violence in Tameside

Serious violence is the intentional use of physical force or power, threatened or actual, against oneself, another person, or against a group or community that either results in or has a high likelihood of resulting in injury, death, psychological harm, maldevelopment, or deprivation.

World Health Organisation



Serious Violence in Tameside

Deprivation



28th most deprived local authority out of 317 local authorities in England.

Poverty

- Increased Adverse Childhood Experiences (ACEs)
- 45% lone-parents are in poverty.
- Higher proportion of low-income jobs.

Wider Determinants

- Lone parent households.
- Not in education employment or training (NEETs)
- Median incomes
- Educational attainment.

Violent Crime



Tameside has seen increases in all reported violent crimes and on an upward trend. This is also the same for the number of attendances to hospital for violence related injuries.

Alcohol and Substance Misuse

- More licensed premises per square km than in the region or nationally.
- Majority of violent crime correlates with the hours when licensed premises are open.

Protected Characteristics

- Higher proportion of the population live with a disability.
- Over-representative population from ethnic minority communities for both victims and perpetrators of violent crime.

Location



Most prevalent around Town Centre locations including Ashton-under-Lyne, Stalybridge, Hyde and Hattersley Town Centres.

Victims



Young males (under 16 years of age) are over-represented in a number of violent crime measures both as victims and perpetrators.

Children & Young People

- High rate of suspensions and permanent exclusions.
- More serious violent offences within the Youth Justice System.

Possession of Weapons



Disproportionately higher compared to the rest of Greater Manchester, linked to Domestic Abuse and associated with young males.

Domestic Abuse



High-risk domestic abuse has high prevalence in Tameside.

A high proportion of violent crime, particularly knife crime is associated with Domestic Abuse in Tameside.

Self-directed Violence



The rate of self-harm in Tameside remains significantly worse than the national average.

Personal Robbery



Lower in Tameside than expected. Males are more likely to be a victim and crimes take place in Town Centres.

Safeguarding and Ageing Well



Increases in adult safeguarding referrals have been seen in the last few years and may be linked to residents facing multi-disadvantage and complex care issues.



Priorities for Tackling Serious Violence in Tameside

(under each of these are between 3 and 7 'We will...' statements and objectives)

Priority 1: COMMUNITY-LED APPROACH

Priority 2: EARLY AND TIMELY INTERVENTION

Priority 3: PARTNERSHIPS FOR CHANGE

Priority 4: EQUALITY, EQUITY AND JUSTICE

Priority 5: TRAUMA RESPONSIVE SUPPORT FOR COMMUNITIES IN TAMESIDE



Next Steps

- The strategy for Tameside will be led by the Community Safety Partnership.
- Developing an action plan to deliver the Tameside Serious Violence Strategy 2024-2029.
- Changes to the services we provide and the work we do (from the evidence in the needs assessment; making sure we meet the priorities and commitments in the Strategy).
- Ongoing conversations and involvement with people living in Tameside, especially those affected by violence.

